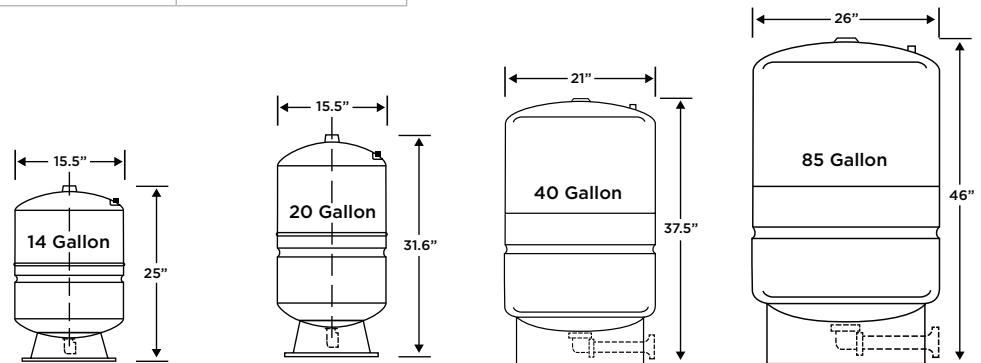


## REVERSE OSMOSIS – NSC, W-Series



SERIES	NSC	NSC	W		W	
<b>System Model</b>	NSC-120	NSC-250	W-500		W-1000	
<b>Part #</b>	16876	16877	109820	109825	109830	109835
<b>Efficiency Rate</b>	50%	50%	70%		70%	
<b>Daily Production (GPD/LPD)*</b>	120 / 454	250 / 946	500/1893	450/1703	1000/3785	900/3407
<b>Membrane Replacement Part #</b>	104998 (white)	104998 (2) (white)	108825		108825 (2)	
<b>Sediment/Carbon Prefilter</b>	104397 (2) (green)	104397 (2) (green)				
<b>GAC Postfilter</b>	104382 (2) (blue)	NA				
<b>Antiscalant Media Pretreatment</b>	NA	104080 (dark green)				

### W-SERIES STORAGE TANK OPTIONS

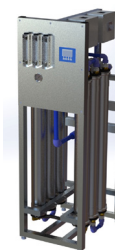


TANK PART NUMBERS	104170	104221	109845	109846
<b>Compatible System Models</b>	NSC	NSC, W-Series	W-Series	W-Series
<b>Tank Type</b>	Bladder			
<b>Tank Description</b>	14 gal with 3/8" connection	20 gal with 3/8" connection	40 gal with 3/8" connection	85 gal with 3/8" connection
<b>Tank Height Inches</b>	25"	31.6"	37.5"	46"
<b>Tank Diameter inches</b>	15.5" DIA	15.5" DIA	21" DIA	26" DIA
<b>Materials</b>	Lined Steel			

# REVERSE OSMOSIS – ROAX



SERIES	ROAX	ROAX	ROAX	ROAX
System Model	N1-2000	N2-4000	N3-6000	N4-8000
Part #	16930	16931	16932	16933
Efficiency Rate	70%	70%	70%	70%
Daily Production (GPD/LPD)*	2,000 / 7,572	4,000 / 15,144	6,000 / 22,717	8,000 / 30,289
Membrane Kit Part #	108500	108500 (2)	108500 (3)	108500 (4)



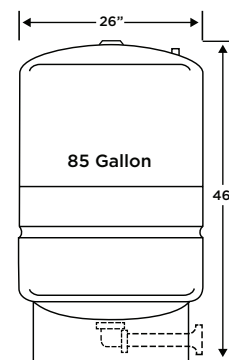
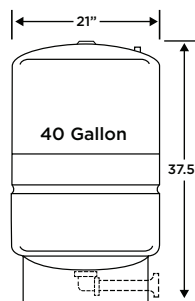
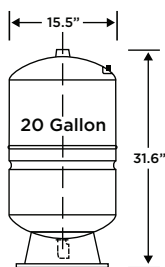
SERIES	ROAX	ROAX	ROAX
System Model	N4-8000	N6-12000	N6-12000
Part #	16934	16935	16936
Efficiency Rate	70%	70%	70%
Daily Production (GPD/LPD)*	8,000 / 30,289	12,000 / 45,425	12,000 / 45,425
Membrane Kit Part #	108500 (4)	108500 (6)	108500 (6)

# REVERSE OSMOSIS – S-Series



SERIES	S	S	S
System Model	S-710	S-1400	S-2500
Part #	109903 / 109902 / 109900	109913 / 109912 / 109911	109923/109922/ 109921
Efficiency Rate	75% / 65% / 50%	75% / 65% / 50%	75% / 65% / 50%
Daily Production (GPD/LPD)*	710 / 2,688	1,400 / 5,300	2,500/ 9,463
Membrane Replacement Part #	108600	108600 (2)	107757 (2)

## S-SERIES/ROAX STORAGE TANK OPTIONS



TANK PART NUMBERS	104165	109720	109721
Compatible System Models	S-Series	S-Series, ROAX	S-Series, ROAX
Tank Type	Bladder		
Tank Description	20 gal with 1/2" connector kit	40 gal with 1/2" connector kit	85 gal with 1/2" connector kit
Tank Height Inches	31.6"	37.5"	46"
Tank Diameter inches	15.5" DIA	21" DIA	26" DIA
Materials	Lined Steel		

Daily production based on 50mg/L TDS, 77°F, to an atmospheric storage tank.